

Phytor Ltd.
Biotechnology Park (JBP)
Ein Kerem campus, Jerusalem, Israel



Tel: 02-6711911
Fax: 153-2-6711911
e-mail: phytor1@gmail.com

PHYTOR

Consulting in Human Health, Toxicology & Regulatory Affairs

Phytor Ltd.

Consultant: Dr. Yehoshua Maor (Ph.D, M.Sc.,B.Pharm.)

JBP Building – Ein Kerem Campus

9112001 Jerusalem – ISRAEL

Phone: +972-2-6711-911

Fax: +972-153-2-6711-911

e-mail: phytor1@gmail.com

Jerusalem, Israel June 25, 2020

Expert opinion on the toxicological aspects and risk assessment of the product *LIFEMEL*, a nutritional supplement from Zuf lab

Expert opinion on the toxicological aspects and risk assessment of the product *LIFEMEL*, a nutritional supplement from Zuf lab.

This initial review relates only to the toxicological aspects and risk assessment of the inactive substances used in the formulation of *LIFEMEL*, a nutritional supplement from Zuf lab. This independent opinion has been done on the request of Zuf lab as represented by Mr. Arik Fahima.

Dr. Yehoshua Maor

Expert in pharmacology, toxicology and regulation of medicines and nutritional supplements.

About my training:

- Bachelor's degree in Pharmacy (B.Pharm , Brazil)
- Medicinal Chemistry degree (M.Sc., Hebrew University)
- PhD in Medicinal Chemistry and Molecular Biology (PhD, Hebrew University)
- Post - Doctoral School of Medicine and Harvard University, Boston, USA, on Pharmacology of cardiovascular
- Coordinator of the Center of Excellence for Research in Agriculture and Environmental Health of the Hebrew University of Jerusalem (HU CEAEH) in the Rehovot campus and lecturer of Toxicology at the Faculty of Medicine in the Ein Kerem campus - Jerusalem.
- Senior consultant at Phytor Ltd. Engaged in consulting in pharmacology, toxicology and regulatory aspects of new drugs and chemical substances of medicinal plants.
- Member of the SOT (Society of Toxicology)
- Member of the ICRS (International Cannabinoid Research Society)

Product Name:

LIFEMEL

Manufacturer:

Zuf lab

Product Description:

Beehive product in a jar
containing 120 gr.

Directions of Use:

One teaspoon, twice a day
before meals.

Product Summary:

LIFEMEL is a product from Zuf. Lab clinically proven and recommended for cancer patients who suffer from anemia and low hemoglobin levels caused by chemotherapy and radiation therapy. Numerous testimonies from both patients and physicians show that when *LIFEMEL* is administered during chemotherapy and radiation therapy it enhances quality of life for the patients by diminishing the deleterious side effects caused by these therapies. In clinical trial conducted by Zidan et al it was reported that administration of *LIFEMEL* prevented neutropenia and reduced the need for Colony-stimulating factors (CSFs) which are used for primary and secondary treatment in patients with grade 4 neutropenia. The use of CSFs is expensive and accompanied by side effects. In this peer reviewed study 40% of the patients did not show recurrence of neutropenia after *LIFEMEL* intake and no need for treatment with CSFs. The intake of *LIFEMEL* clinically improved patients' quality of life.

The blend of herbs which comprise the bees' feed used in the production of *LIFEMEL* possess bioactive substances, such as iron, proteins, enzymes and vitamins, highly needed for regular functioning of the immune system. The active ingredients, once absorbed in the blood, stimulate the production of blood cells by increasing the number of thrombocytes and enhancing the activity of hemoglobin.

These biological activities are recorded on the WHO monographs and are corroborated by peer-reviewed scientific publications.

Herbal components in the bees' feed:

The herbal components in this product were not added to the beehive product. Instead, they were added to the bees' feed and based on this nutrition, the bees produced the beehive product which contains the herbal compounds or their metabolites as can be seen in the chromatographic analysis, in the end of this document.

	Botanical name	Part of the plant
1	Uncaria tomentosa	Dried stem bark
2	Echinacea purpurea	Leaves, Roots
3	Beta vulgaris	Root
4	Eleutherococcus senticosus	All plants
5	Calendula officinalis	Leaves, Flowers
6	Trifolium pratense	Leaves, Flowers
7	Urtica dioica	Flowering plants
8	Melissa officinalis	Oil of the plants
9	Vaccinium myrtillus	Leaves, fruit
10	Taraxacum officinale	Leaves, Roots
11	Ficus carica	Fruit
12	Morus alba	Leaves
13	Chicorium intybus	Leaves, Roots
14	Inula helenium	Leaves, Roots
15	Ribes nigrum	Leaves, Fruit
16	Avena sativa	Leaves, Fruit

After thoroughly reviewing the scientific literature and professional, this document will refer only to the following aspects relating to *LIFEMEL* product components:

1. The amount of active substance in the plant before and after preparation of the beehive product
2. Reaction between components
3. Usual doses and toxicity of formula or component
4. Warnings (if any) about the product
5. Levels of safety

1. Active substances in the plants before and after preparation of the beehive product

The amount of active ingredient in the plants before and after preparation of the beehive product can vary with the harvest season, cultivation location, and other factors.

As for herbal medicines, the active ingredient is sometimes known and sometimes requires co - factors (other materials in the plant that are active together synergistically) to achieve therapeutic goals. This leads to complications in tagging the active ingredient. One-way manufacturers have found to solve the problem of labeling is selecting the marker element (the most active component in the plant) and perform standardization of the cursor element.

However, official standardization by government agencies such as the Ministry of Health, has not been achieved yet, and therefore not required by the health of natural herbal products manufacturers in Israel or in Europe. Consequently, various companies use different markers, or different levels of the same markers, or different methods of testing marker compounds.

Both the Israeli Ministry of Health and EMEA/EFSA do not publish a list of active substances in plants. Instead, they provide a list of plants approved for use.

2. Reaction between components

The components of the bees' feed go through the bees' digestive system and produce metabolites which are still present and stable in the final product.

A fingerprint of the herbal compounds still can be observed in the chromatogram (HPLC), which indicates the ability of these compounds to exert their pharmacological activities as recorded in the pharmacopeia and other officially accepted sources.

The matrix of the beehive product is very stable and there is no interaction between the chemical compounds during the shelf life, as can be seen in the stability tests performed on the beehive products.

3. Usual doses and toxicity of formula or components

The recommended daily dose of the product allows the use of a reasonable and absolutely safe margin of toxicity. The product can be safely administered up to 4 teaspoons a day for an adult, without any fear of side effects or toxicity.

The dilution of the herbal components by the bees' processing of the bees' feed relatively weakens the toxicity of the formula thus requiring relatively large amounts the product in order to exert its pharmacological properties. To the best of my knowledge, from the toxicological standpoint, there is no fear of toxicity or poisoning from taking this product.

4. Warnings (if any) about the product

Pregnant women, lactating women, patients taking prescription drugs, children- should consult their family practitioner prior to taking this product.

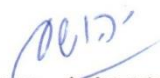
5. Level of safety

Based on a critical evaluation of available public data sources listed in the bibliographic sources and above, as an expert in toxicology I have reached the conclusion that the active ingredients used in the formulation of *LIFEMEL* is safe for human use especially when followed the instructions for use from the manufacturer. The formulation possesses a wide safety margin concerning its risk of toxicity.

In conclusion, since these substances have been certified by the Ministry of Health and possess a long history of safe use by humans, the review of the substances and the product allows me to state that the product has a high safety level, once it is administered in accordance with the use and guidance of the Ministry of Health.

Sincerely,

Yehoshua Maor
Ph.D., M.Sc., B.Pharm.


פיטאור בע"מ
ח.פ. 514486240
PHYTOR LTD.

Product HPLC Analysis Results:

Plant	Product
<i>Uncaria tomentosa</i>	<i>LIFEMEL</i>

Plant extraction

25 ml of HPLC grade boiling water were poured into glass erlenmeyer containing 1 g of the desirable plant material and the erlenmeyer flasks were shaken for 1 hour. Then, samples from the extractions were centrifuged, and the supernatants were subjected for RP-HPLC analysis.

Product preparation

DEFENSEMEL was diluted 1:3 in HPLC grade water, centrifuged, and supernatant was taken for RP-HPLC analysis.

HPLC conditions

A Dionex ultimate 3000 system and a phenomenex C-18 (4.6 x 250) Luna column were used. Mobile phase consisting of a gradient (Table 1) of purified water acidified with 0.05% of acetic acid, (Phase A) and acetonitrile (Phase B). The flow rate and column oven temperature were 1mL/min and 40°C respectively. Optimal detection wavelength was chosen for each plant and its related product.

Table 1

Time (min)	Phase A %	Phase B %
0	74	26
1	58	42
4.5	56	44
4.8	10	90
6	10	90
6.5	74	26
8	74	26
10	74	26

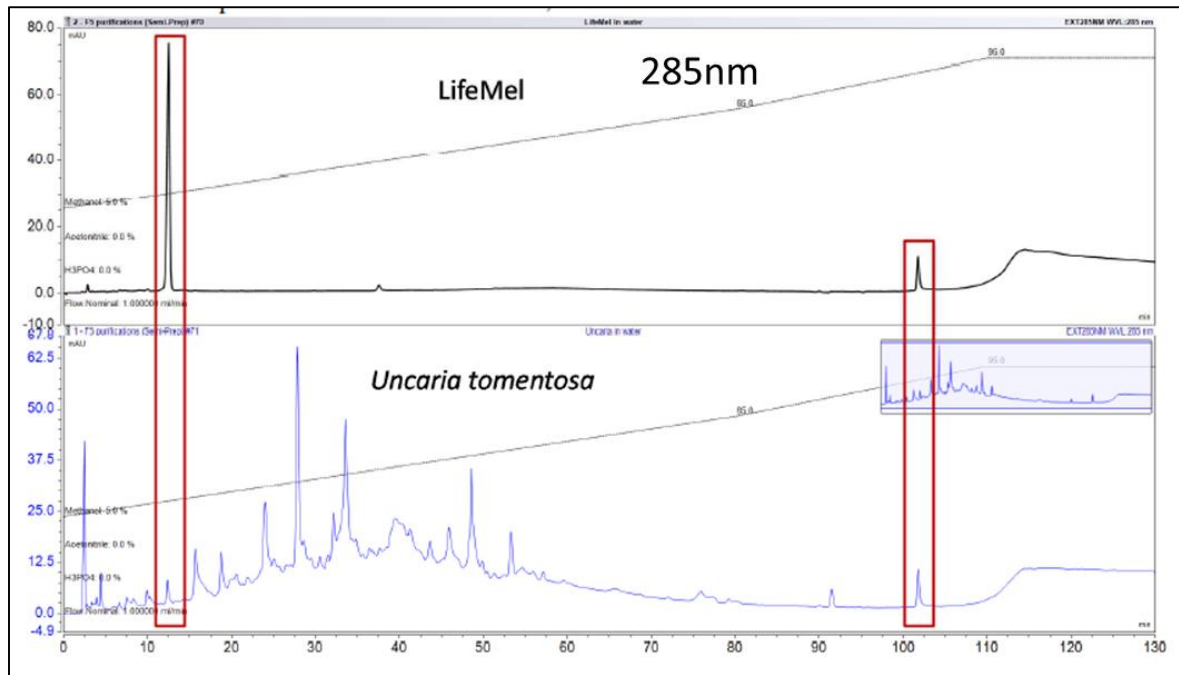


Figure 1: Chromatogram of the product *LIFEMEL* and its main herbal component. The number on the upper right side represents the optimal wave length for the desired compounds detection

**Bibliographic References in addition to the EMEA document regarding the
herbal substances in the formula**

- Alexandre JT. et al. Anti-inflammatory and Antiresorptive Effects of Calendula Officinalis on Inflammatory Bone Loss in Rats. Clin Oral Investig. 2018 .
- Arevström L. et al. Freeze-dried Bilberry (Vaccinium Myrtillus) Dietary Supplement Improves Walking Distance and Lipids After Myocardial Infarction: An Open-Label Randomized Clinical Trial. Nutr Res. 2019.
- Benjamim CJ. et al. Beetroot (Beta Vulgaris L.) Extract Acutely Improves Heart Rate Variability Recovery Following Strength Exercise: A Randomized, Double-Blind, Placebo-Controlled Crossover Trial-Pilot Study. J Am Coll Nutr. 2020.
- Blumenthal M, editor. The Complete German Commission E Monographs: Therapeutic Guide to Herbal Medicines. The American Botanical Council, 1998.
- Bradley PR, editor. British Herbal Compendium, Vol I. Bournemouth: British Herbal Medicine Association, 1992.
- British Herbal Pharmacopoeia. Keighley: British Herbal Medicine Association, 1983.
- British pharmacopoeia. Vol. I (International edition and addendum). London, Her Majesty's Stationery Office, 1995.
- Chan EWC., LYE PY. and Wong SK. Phytochemistry, pharmacology, and clinical trials of Morus alba. Chin J Nat Med. 2016 .
- Chen, H.; Yu, W.; Chen, G.; Meng, S.; Xiang, Z.; He, N. Antinociceptive and antibacterial properties of anthocyanins and flavonols from fruits of black and non-black Mulberries. Molecules 2017, 23, 4.
- Choi BR. et al. Lemon Balm and Dandelion Leaf Extract Synergistically Alleviate Ethanol-Induced Hepatotoxicity by Enhancing Antioxidant and Anti-Inflammatory Activity. J Food Biochem. 2020.
- Chun J., Song K. and Shik Kim Y. Sesquiterpene Lactones-Enriched Fraction of Inula Helenium L. Induces Apoptosis Through Inhibition of Signal Transducers and Activators of Transcription 3 Signaling Pathway in MDA-MB-231 Breast Cancer Cells. Phytother Res. 2018.
- Diaz K. et al. Isolation and Identification of Compounds from Bioactive Extracts of Taraxacum officinale Weber ex F. H. Wigg. (Dandelion) as a Potential Source of Antibacterial Agents. Evid Based Complement Alternat Med. 2018.

- Dong L. et al. Taraxacum officinale Wigg. Attenuates Inflammatory Responses in Murine Microglia through the Nrf2/HO-1 and NF- κ B Signaling Pathways. *Am J Chin Med.* 2020.
- ESCOP monographs on the medicinal uses of plant drugs. Fascicule 3. Devon, European Scientific Cooperative on Phytotherapy, 1997.
- Esposito S. et al. Therapeutic Perspectives of Molecules From Urtica dioica Extracts for Cancer Treatment. *Molecules.* 2019.
- European pharmacopoeia, 3rd ed. Strasbourg, Council of Europe, 1996.
- Gardiner P, Phillips R, Shaughnessy AF. *Herbal and Dietary Supplement drug Interactions in Patients with Chronic Illnesses*, *Am Fam Physician.* 2008;77:73-78.
- Guidelines for Herbal ATC Classification, The Upsala Monitoring Centre. WHO Collaborating Centre of International Drug Monitoring. 2004.
- Hansel R. *Phytopharmaka*, 2nd ed. Berlin, Springer-Verlag, 1991.
- Herbal ATC Index, The Upsala Monitoring Centre. WHO Collaborating Centre of International Drug Monitoring. 2004.
- Hou W. et al. Screening and Isolation of cyclooxygenase-2 Inhibitors From Trifolium Pratense L. Via Ultrafiltration, Enzyme-Immobilized Magnetic Beads, Semi-Preparative High-Performance Liquid Chromatography and High-Speed Counter-Current Chromatography. *J Sep Sci.* 2019.
- Izzo AA. *Interactions between Herbs and Conventional Drugs: Overview of the Clinical Data*, *Med Princ Pract* 2012; 21: 404-428.
- Javid AZ. et al. The Effects of Melissa Officinalis (Lemon Balm) in Chronic Stable Angina on Serum Biomarkers of Oxidative Stress, Inflammation and Lipid Profile. *Asia Pac J Clin Nutr.* 2018 .
- Khattab HAH., Abounasef SK. and Bakheet HN. The Biological and Hematological Effects of Echinacea purpurea L. Roots Extract in the Immunocompromised Rats with Cyclosporine. *J Microsc Ultrastruct.* 2019 .

- Khazaei M. and Pazhouhi M. Antiproliferative Effect of Trifolium Pratens L. Extract in Human Breast Cancer Cells. *Nutr Cancer*. 2019.
- Kim J. et al. Vaccinium Myrtillus Extract Prevents or Delays the Onset of Diabetes--Induced Blood-Retinal Barrier Breakdown. *Int J Food Sci Nutr*. 2015.
- Kim M. et al. Inhibitory Effect of Oat Bran Ethanol Extract on Survival and Gemcitabine Resistance of Pancreatic Cancer Cells. *Molecules*. 2019 .
- Koc K. et al. Antioxidant and Anticancer Activities of Extract of Inula helenium (L.) in Human U-87 MG Glioblastoma Cell Line. *J Cancer Res Ther*. 2018 .
- Manayi A., Vazirian M. and Saeidnia S. Echinacea purpurea: Pharmacology, phytochemistry and analysis methods. *Pharmacogn Rev*. 2015
- Martindale, *The Extra Pharmacopoeia*: 30th Edition. (Revnolds JEF, editor). London: The Pharmaceutical Press, 1993
- Mawa S., Husain K. and Jantan I. Ficus Carica L. (Moraceae): Phytochemistry, Traditional Uses and Biological Activities. *Evid Based Complement Alternat Med*. 2013.
- Mills SY. *The dictionary of modern Herbalism* Wellingborough:Thorsons, 1985
- Newall CA, Anderson LA, Phillipson JD. *Herbal Medicines: A Guide for Health Care Professionals*. London: Pharmaceutical Press, 1996
- Santos Araújo MDC. et al. Uncaria tomentosa-Adjuvant Treatment for Breast Cancer: Clinical Trial. *Evid Based Complement Alternat Med*. 2012.
- Street R., Sidana J. and Prinsloo G. Cichorium Intybus: Traditional Uses, Phytochemistry, Pharmacology, and Toxicology. *Evid Based Complement Alternat Med*. 2013.
- Tierra M (Editor) *American Herbalism: Essays on Herbs and Herbalism*, Crossings Press, 1992.
- Tohda C. et al. Combined Treatment With Two Water Extracts of Eleutherococcus senticosus Leaf and Rhizome of Drynaria fortunei Enhances Cognitive Function: A Placebo-Controlled, Randomized, Double-Blind Study in Healthy Adults. *Nutrients*. 2020.
- Tohda C. et al. Combined Treatment With Two Water Extracts of Eleutherococcus senticosus Leaf and Rhizome of Drynaria fortunei Enhances Cognitive Function:

- A Placebo-Controlled, Randomized, Double-Blind Study in Healthy Adults. *Nutrients*. 2020 .
- Tung YT. et al. Antifatigue Activity and Exercise Performance of Phenolic-Rich Extracts From *Calendula officinalis*, *Ribes nigrum*, and *Vaccinium myrtillus*. *Nutrients*. 2019 .
- Turrini E. et al. Overview of the Anticancer Profile of Avenanthramides From Oat. *Int J Mol Sci*. 2019.
- Valle V. Della, *Uncaria tomentosa* . *G Ital Dermatol Venereol.*, 2017
- Wang Q. et al. Total Sesquiterpene Lactones Isolated From *Inula Helenium L.* Attenuates 2,4-dinitrochlorobenzene-induced Atopic Dermatitis-Like Skin Lesions in Mice. *Phytomedicine*. 2018 .
- Wu W. et al. Avenanthramide Aglycones and Glucosides in Oat Bran: Chemical Profile, Levels in Commercial Oat Products, and Cytotoxicity to Human Colon Cancer Cells. *J Agric Food Chem*. 2018 .
- Yamauchi Y, Ge YW, Yoshimatsu K, et al. Memory Enhancement by Oral Administration of Extract of *Eleutherococcus senticosus* Leaves and Active Compounds Transferred in the Brain. *Nutrients*, 11(5). pii: E1142. 2019
- Yan YY. et al. Active Ingredients of *Inula Helenium L.* Exhibits Similar Anti-Cancer Effects as Isoalantolactone in Pancreatic Cancer Cells. *Nat Prod Res*. 2019 .
- Yokoyama SI. et al. Red Clover (*Trifolium Pratense L.*) Sprout Prevents Metabolic Syndrome. *J Nutr Sci Vitaminol (Tokyo)*. 2020 .
- Yu D. et al. Anti-inflammatory Effects of Essential Oil in *Echinacea Purpurea L.* *Pak J Pharm Sci*. 2013.
- Ziaei R. et al. The Effect of Nettle (*Urtica dioica*) Supplementation on the Glycemic Control of Patients with Type 2 Diabetes Mellitus: A Systematic Review and Meta-Analysis. *Phytother Res*. 2020 .
- Zidan J, et al. Prevention of Chemotherapy-Induced Neutropenia by Special Honey Intake. *Med Oncol* 23(4):549-52. 2006.
- <http://reference.medscape.com/drug-interactionchecker>
- <http://abc.herbalgram.org/site/PageServer?pagename=Monographs>